



CYBERNAUTT

CYBERNAUTT

CNI-B5M4LVFME



5MP IP BULLET METAL
OUTDOOR CAMERA

CYBERNAUTY

CNI-B5M4LVFME

2 YEARS WARRANTY

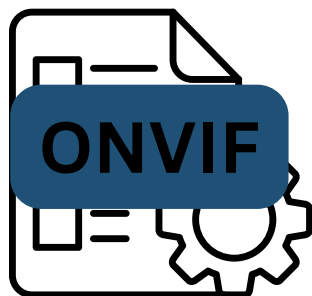


CYBERNAUTT

CNI-B5M4LVFME



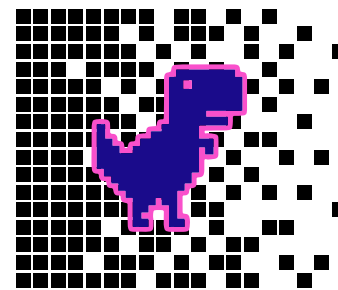
Smart265



Onvif



Slink



5 MP



Motion Detect



APP



D-WDR



Network



Illumination



Human Detect

CYBERNAUTT

CNI-B5M4LVFME



5MP

HD BULLET CAMERA

***Sturdy Full
Metal Body***



Color Night Vision

Description

- Resolution 5MP 2592*1904@20fps, 4MP 2560*1440@25fps ,3MP 2304*1296@25fps ,2MP 1920*1080@25fps is optional.
- Built-in humanoid detection algorithm;
- Detection frame 5fps, detect 5 people at the same time;
- Low consumption, low code stream, low delay;
- H.265 compression format, save bandwidth and storage space;
- Support Smart IR to avoid Infrared over-exposure at night;
- Support ICR auto switch, achieve best result for D&N video;
- Support PoE
- Support 3D DNR and digital WDR;
- Support auto-electronic shuttle to suit different surveillance environment Support two-way audio intercom
- Support HTTPS encrypted transmission
- Support Onvif, email, NTP service

Technical Description

Camera	
Chipset	T31X
Sensor	1/2.7", 5MP low illumination CMOS sensor
Lens	Support fixed lens and varifocal lens
D&N	ICR switch, auto/color/B&W/CDS trigger/ customized time
D-WDR	WDR (Off/Low/Middle/High)
IR Led Control	IR/warm/dual light, auto/manual/off, support 0-100 brightness adjust
3D DNR	Off/Low/Middle/High/Higher
Defog	Off/Low/Middle/High
Mirror	Off/horizontal mirror/vertical mirror/180° flip
Image Setting	Brightness, contrast, sharpness, saturation, chroma
Humanoid Detection	
Detection Quantity	≤5 person
Humanoid Size	Humanoid pixel≥40X40
Detection Ratio	≥99% (meet above requirement)
Capture Corresponding speed	≤1s
Max Detection Frame	5fps/s
Fault Detection Ratio	≤2%
Detect Part	People with any posture including half body,head,hand shoulder
Track People	Support
Detection Mode	Support static and dynamic humanoid detection
Detection Method	Image detection during day or night time with lights or IR Leds
Detection Area	Appointed area, default full-screen
Upload Method	Upload it under private protocol
Trigger Method	Video trigger
Audio & Video Encoding	
Standard	Smart 265, H.265,H.264
Encoding Feature	Main stream:5MP 2592*1904,4MP 2560*1440@20fps, 3MP 2304*1296@20fps, 2Mp 1920*1080@25fps Sub-stream:D1(720*576),VGA(640*480),Q720P(640*360),CIF(352*288),QVGA(320*240)
Max Resolution	5MP 2592*1904
Video Code Rate	Fixed code rate,variable code rate(main stream:160Kbps-4000kbps)
Video Type	Composited stream/video stream
Audio Standard	G.711u/ G.711A 64Kbps
Network Function	
Network protocol	TCP/IP,UDP,HTTP,HTTPS,DHCP,RTSP,DDNS,NTP,PPPOE,UPNP,SMTP
Connection Protocol	Slink, Onvif, GB28181 (option)
Security Mode	Authorized user name and password, HTTPS encryption, AES connecting encryption, RTSP verification
Motion Detection	Set detection area, can set multi-level sensitivity
Occlusion Alarm	Support 1 area
Privacy Mask	Support 4 areas
Schedule Linkage	Snapshot, email
Device Abnormal Inspection	Support network broken alarm, IP conflict alarm, illegal visiting alarm
Character Overlay (OSD)	Title, time and date overlay, multi-line, and color of characters optional
Port	
Network Port	RJ45 10M/100M network self-adaptation
Audio	MIC Input/ Output
Working Humidity	0%~90%